



THE
CHATWIN
BUILDING
81 COLMORE ROW

NEW FLEXIBLE,
PRESTIGIOUS OFFICES

DISCOVER THE CHARACTER OF
COLMORE

DISCOVER THE CHARACTER OF
COLMORE

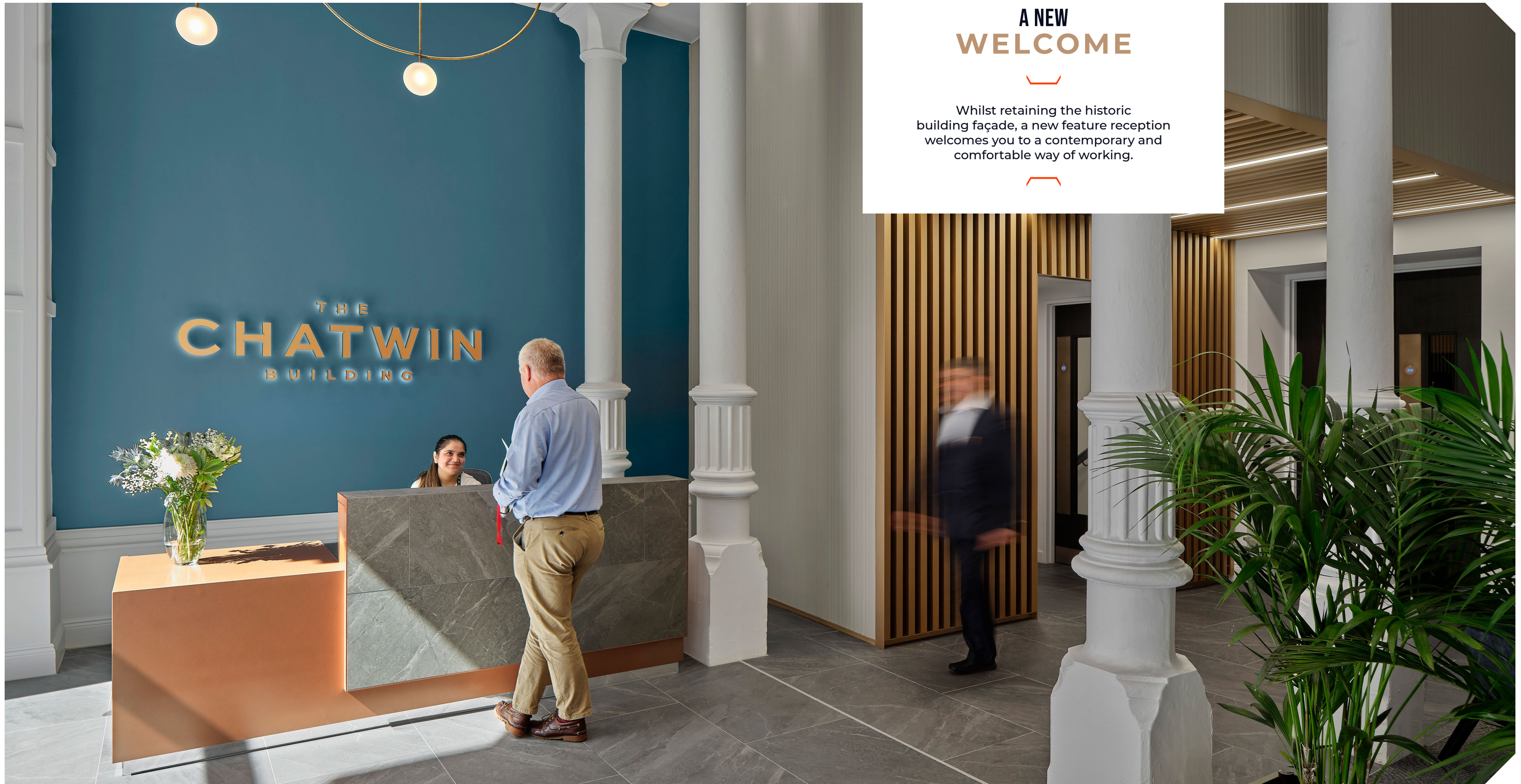
AFTER 150 YEARS OF BEING PART OF THE COLMORE COMMUNITY, 81 COLMORE ROW BEGINS A NEW CHAPTER.

The Chatwin Building is the refurbishment and extension of the Grade II listed 81 Colmore Row, breathing new life into the building whilst retaining the original character to offer space in the heart of the Colmore business district.

Named after Julius Alfred Chatwin, born in Birmingham and one of the City's most prolific architects. His legacy lives on in the form of many buildings still standing today including the impressive Old Joint Stock pub, the graceful St Philip's Cathedral, and a huge number of other churches throughout the region.

This is a chance to be in a characterful building and be part of a street full of history and culture.





A NEW WELCOME

Whilst retaining the historic building façade, a new feature reception welcomes you to a contemporary and comfortable way of working.



VIEWS FROM THE TOP

Take in the breathtaking views of Cathedral Square and Colmore Row from the new balcony terraces.



RE-IMAGINED SPACE

As the needs of occupiers evolve in a new age of working, generous and spacious communal areas have been created for occupiers to enjoy.

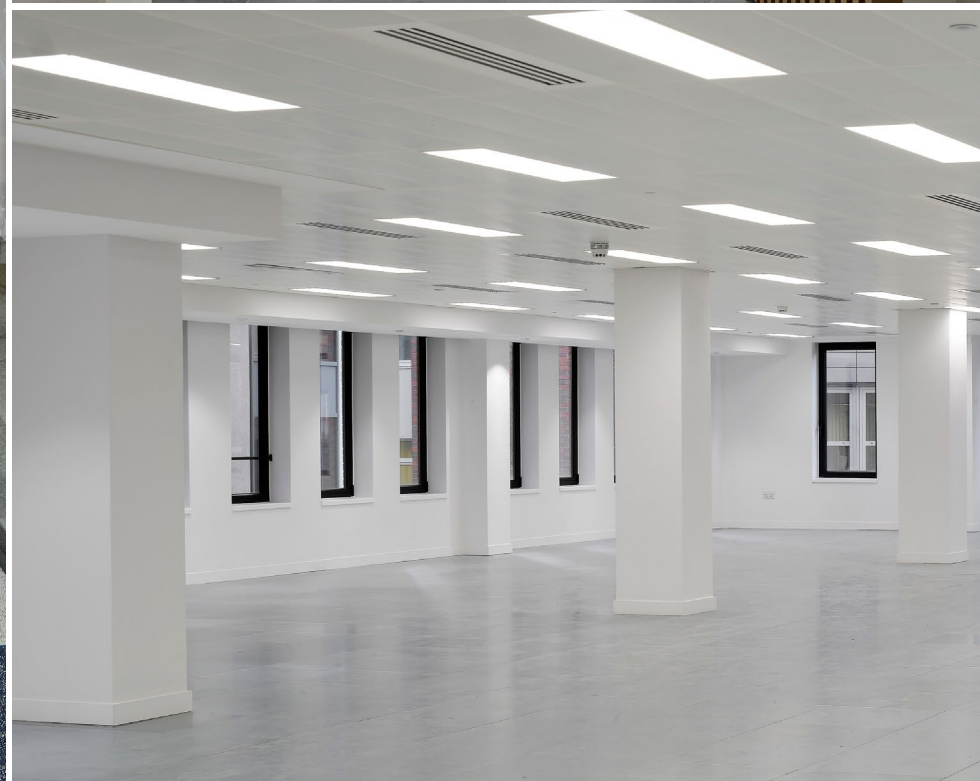
This welcoming and re-imagined amenity area offers flexible breakout and function space, bookable meeting rooms and a stunning roof terrace which all contribute to a better way of working.

ULTRAFAST INTERNET NOW AVAILABLE

The Chatwin Building offers 10GB tenant-ready fibre infrastructure, with the ability for occupiers to be up and running within just 24 hours.

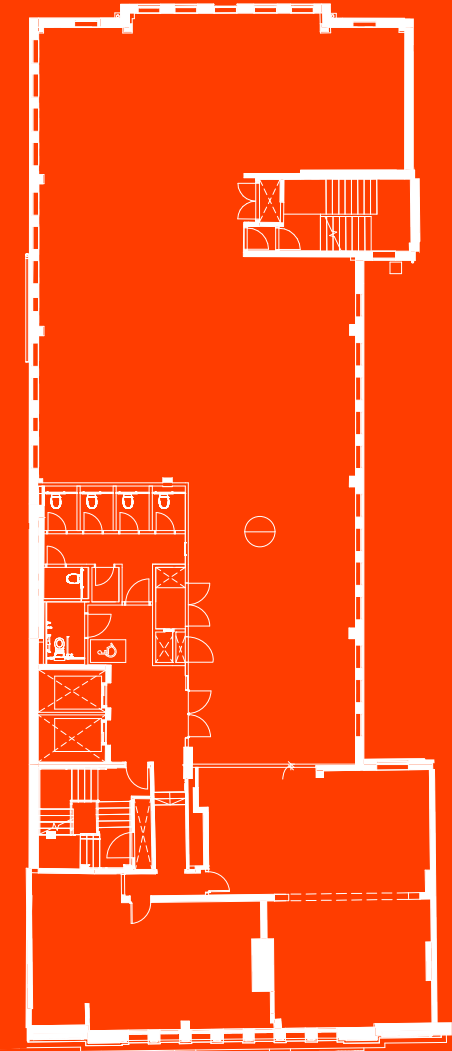
CONTEMPORARY

A NEW CONTEMPORARY ENVIRONMENT
WRAPPED IN HISTORICAL IMPORTANCE.



TYPICAL FLOOR

Ranging from 3,301 SQ FT to 4,689 SQ FT



FLOOR SPECIFICATION



FLOOR 6. BREWIN DOLPHIN

FLOOR 5. BREWIN DOLPHIN

FLOOR 4. 3,301 SQ FT

FLOOR 3. 4,689 SQ FT

FLOOR 2. 4,652 SQ FT

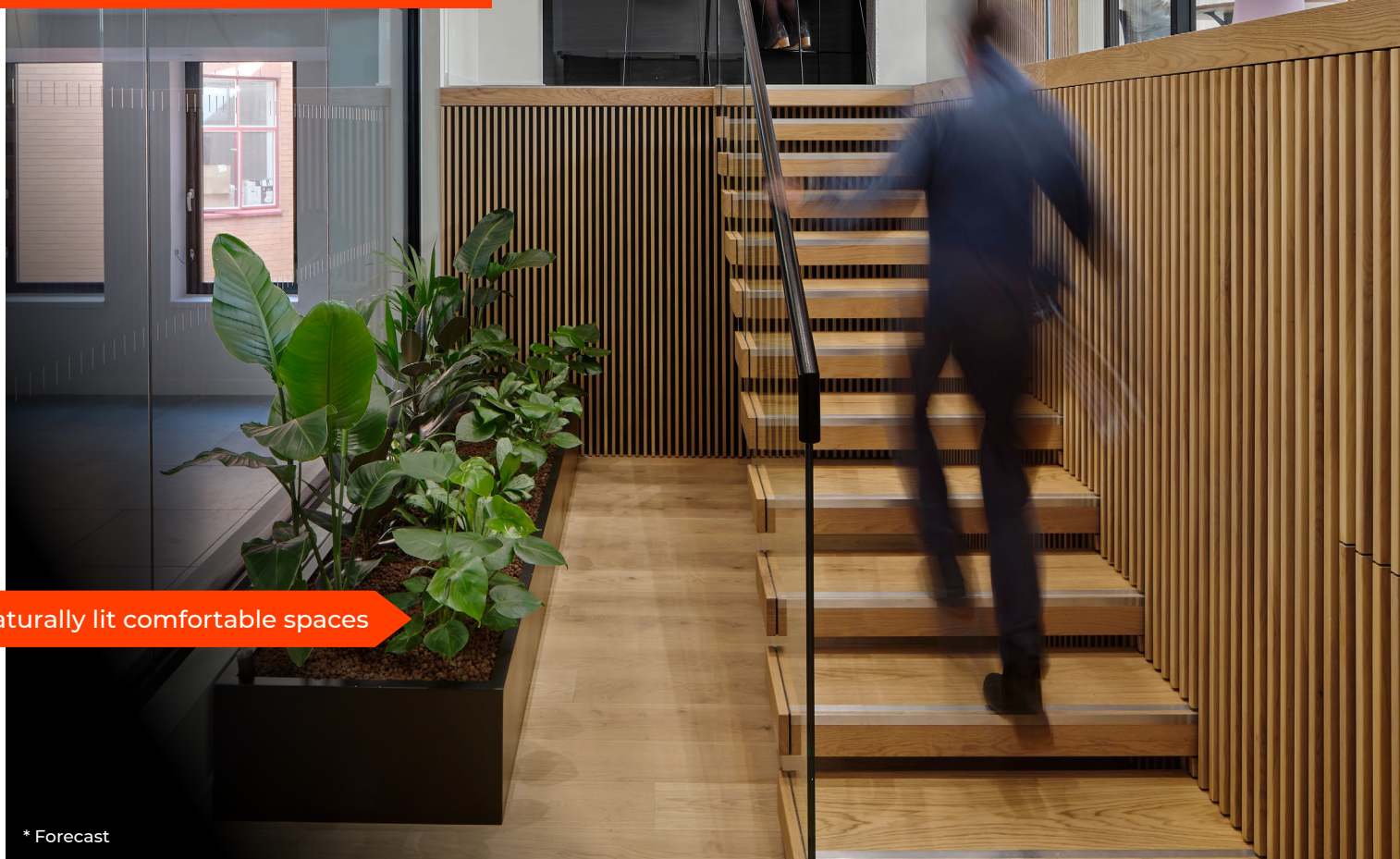
FLOOR 1. 3,338 SQ FT

IPMS 3

- Full access raised floors
- Suspended plank ceiling
- LED lighting
- Brand new VRF air conditioning
- High quality WCs
- 2 brand new lifts

ESG CREDENTIALS

- › EPC - B*
- › BREEAM In Use - Excellent*
- › 100% Renewable Electricity
- › Brand new energy efficient M&E with BMS
- › Communal Collaboration Space with balcony
- › Planting scheme



Balcony views
across St Philips

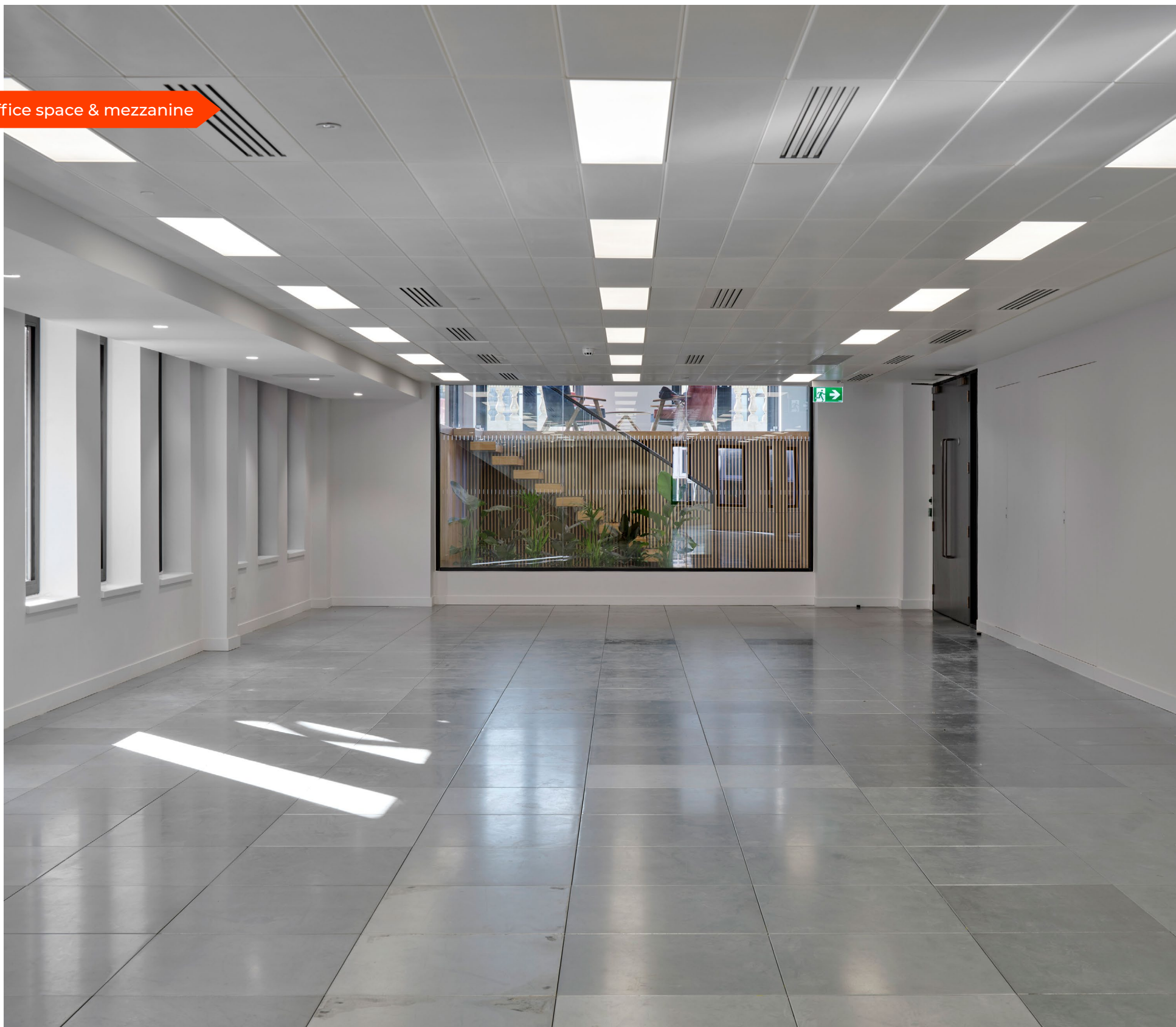


Large communal
meeting rooms

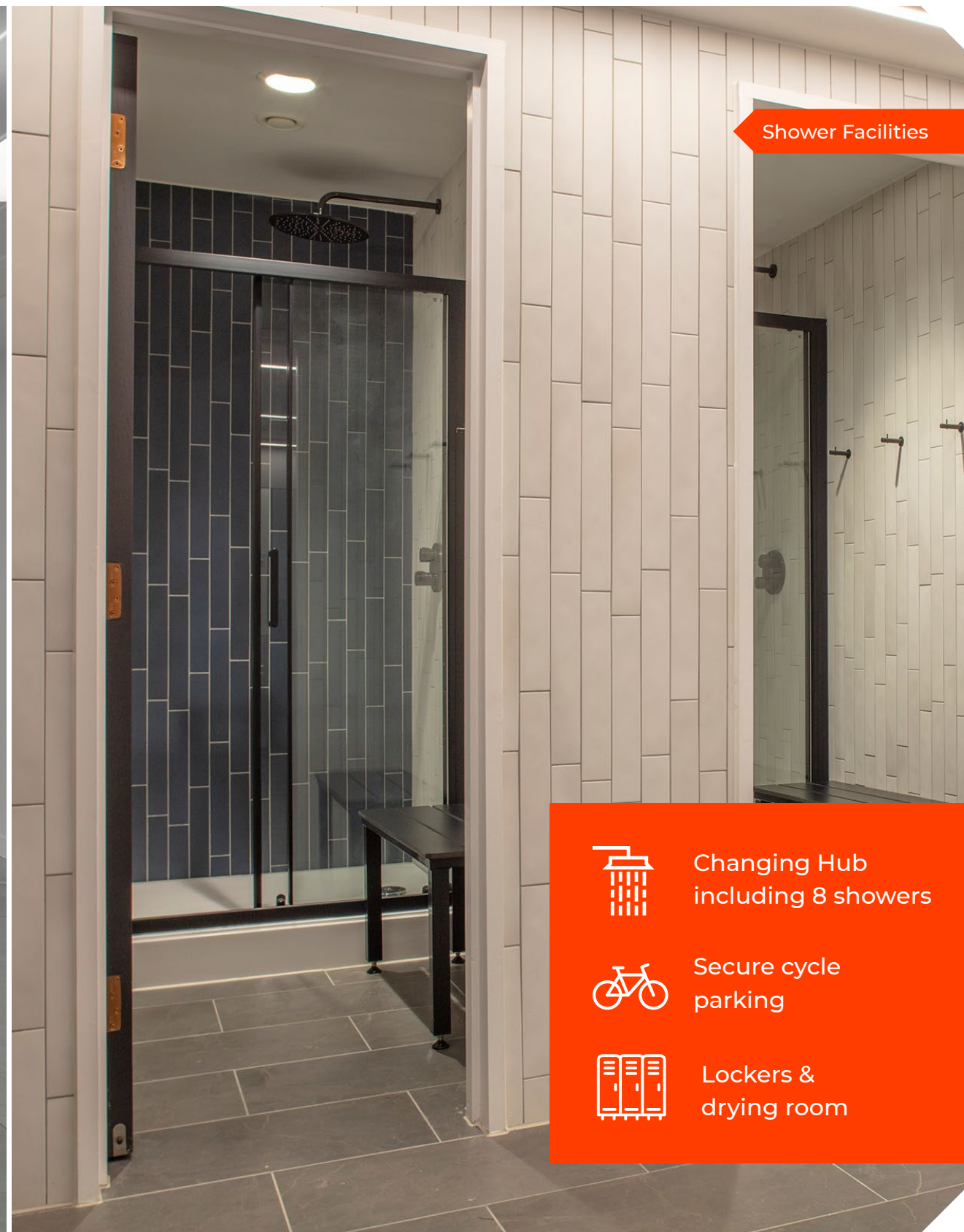
Naturally lit comfortable spaces

* Forecast

Office space & mezzanine



Shower Facilities



Changing Hub including 8 showers



Secure cycle parking



Lockers & drying room

CONNECT AT CHATWIN

THE CHATWIN BUILDING IS ONLY A 3 MINUTE WALK TO BIRMINGHAM SNOW HILL STATION AND JUST A 6 MINUTE WALK TO NEW STREET STATION.

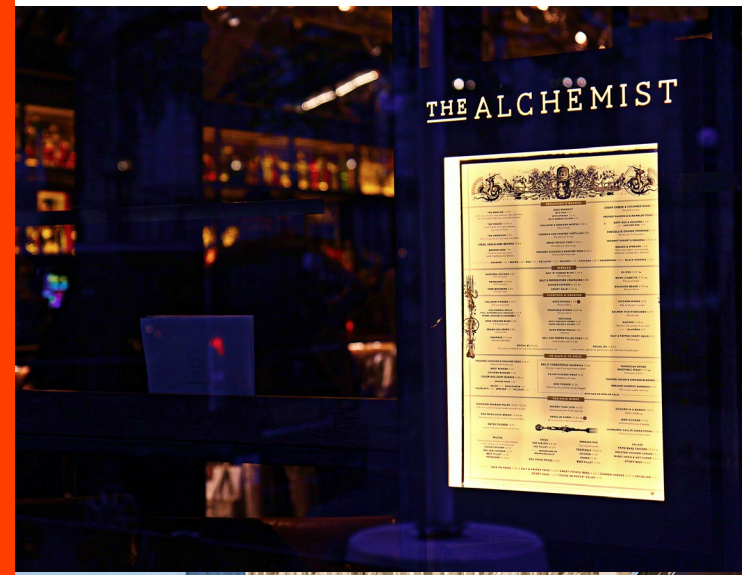
The location offers so many choices when it comes to great food and drink within easy walking distance.



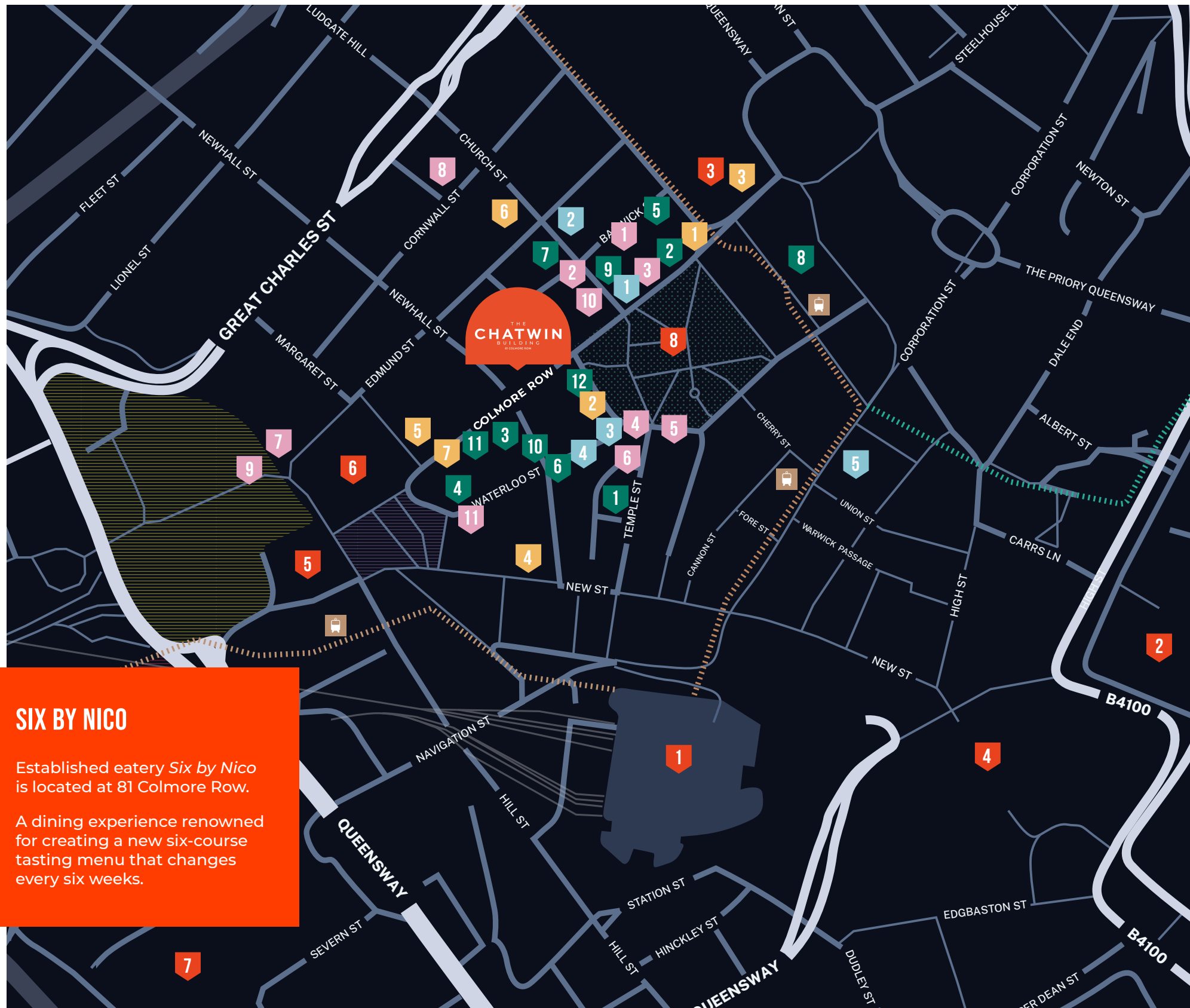


LOCATED ON COLMORE ROW, THE CHATWIN BUILDING IS IN THE VERY HEART OF BIRMINGHAM'S BUSINESS COMMUNITY.

With views of St Philip's Cathedral and a vast choice of restaurants, bars and other amenities, this newly refurbished space is bringing one of Birmingham's historical buildings back in a contemporary way whilst retaining its beautiful historic past.



DISCOVER COLMORE



SIX BY NICO

Established eatery *Six by Nico* is located at 81 Colmore Row.

A dining experience renowned for creating a new six-course tasting menu that changes every six weeks.

RESTAURANTS

- 1 Tattu
- 2 Fazenda
- 3 Gusto
- 4 Fumo
- 5 The Ivy
- 6 San Carlo
- 7 Dishoom
- 8 Purnells
- 9 Rosa's Thai Cafe
- 10 Gaucho
- 11 Adam's

CAFES

- 1 200 Degrees
- 2 Damascena
- 3 Costa
- 4 Second Cup
- 5 Starbucks
- 6 Urban Coffee
- 7 Java Lounge

BARS

- 1 The Botanist
- 2 The Alchemist
- 3 The Colmore
- 4 PureCraft Bar
- 5 Primitivos
- 6 Cosy Club
- 7 The Roebuck
- 8 The Good Intent
- 9 Madeleine at The Grand
- 10 Dirty Martini
- 11 Henman & Cooper
- 12 The Old Joint Stock

HOTELS

- 1 The Grand
- 2 Hotel Du Vin
- 3 Premier Inn
- 4 N°8 Waterloo St Apartments
- 5 Staybridge Suites

WALKING DISTANCES

- 1 New Street Station
6 mins
- 2 Moor Street Station
9 mins
- 3 Snow Hill Station
3 mins
- 4 Bullring
10 mins
- 5 Town Hall
5 mins
- 6 Museum & Art Gallery
4 mins
- 7 Mailbox
9 mins
- 8 St Philip's Cathedral
1 min

- Victoria Square
- Paradise
- Arena Central
- Green Space
- Metro Stops
- Metro
- Future Metro Extensions

DISCOVER THE CHARACTER OF
COLMORE

thechatwinbuilding.co.uk

Carter Jonas



Alex Tross

M: 07789 027 191
T: 0121 306 0401

Alex.Tross@carterjonas.co.uk

Jonathan Carmalt

M: 07967 184245
T: 0121 214 9935

jonathan.carmalt@jll.com

THE
CHATWIN
BUILDING

81 Colmore Row
Birmingham
B3 2BA